

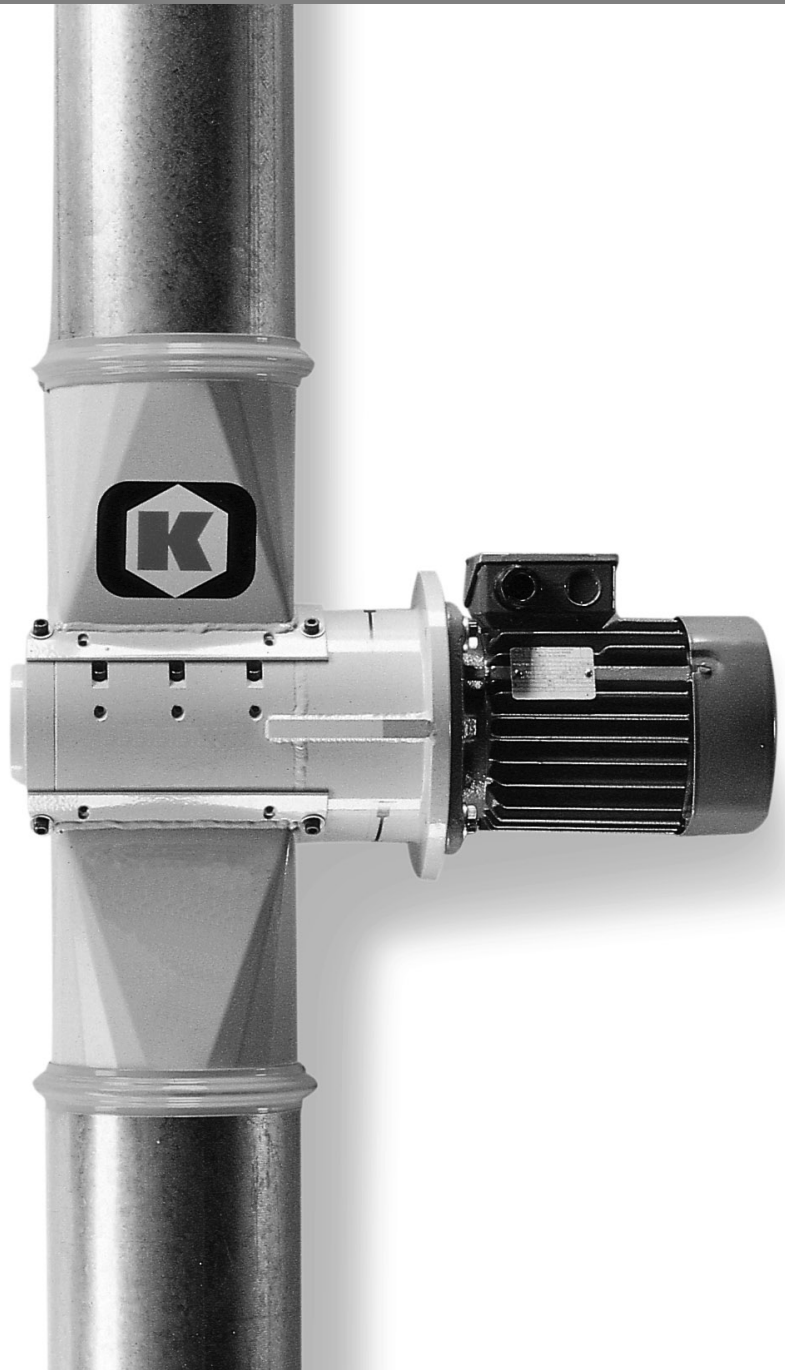
Multicutter

The Kongskilde Multicutter has been developed for continuous cutting of waste edge trim from machines for filmblowing, packaging-, paper production and slitters.

The Multicutter consists of a fixed and a rotating set of blades driven by a direct-coupled motor. The blades are made from specially hardened steel with great resistance to wear and an extended service life. Adjustment and resharping of the blade sets is possible and is the only form of maintenance.

Application

The Multicutter is mounted in the Kongskilde OK pipe system, conveying the waste away from the production machinery.

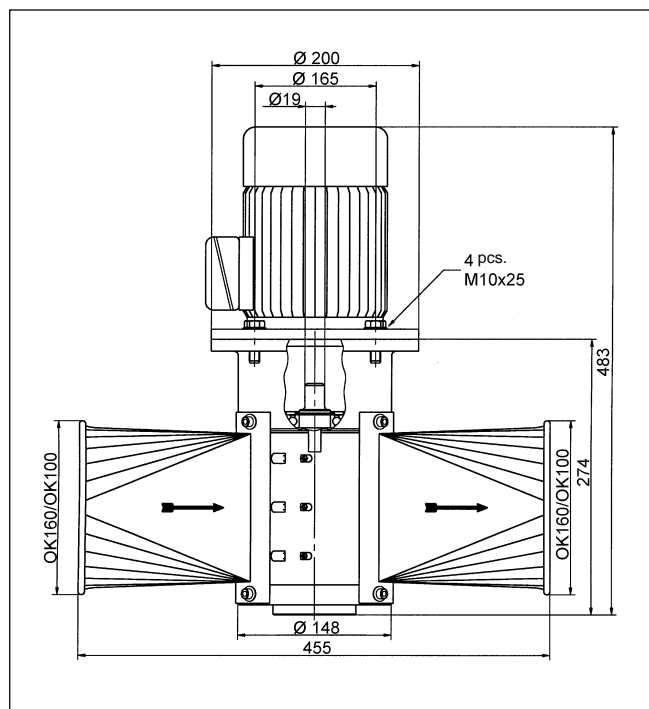


Kongskilde Multicutter

Technical data

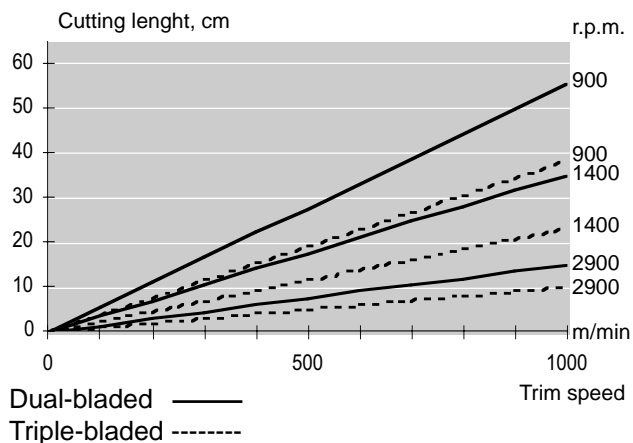
Multicutter			
Rotor	Oblique cutter blades 2 pcs. 3 pcs.		
Transmission	Direct, with nylon coupling		
Noise level	Less than 80 db (A)		
Motors			
Motor types for Multicutter	MS80 K2 B5 IP55 0.75 kW	MS80 G4 B5 IP55 0.75 kW	MS80 G6 B5 IP55 0.75 kW
R.P.M.	2900	1400	900
Weight in kg, motor og Multicutter	30 kg	31 kg	31.8 kg
Nom. Amp consumption at 400 V	1.7	2.1	1.7
Wiring: 3 x 400 V, 50 Hz			

Dimensions

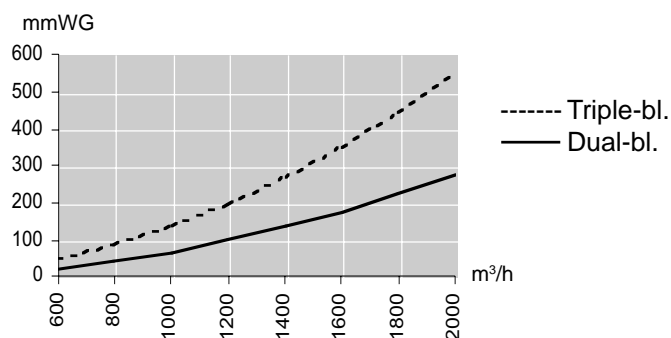


Cutting length

Cutting length can only be taken as a guide line. It may differ a lot.



Backpressure Multicutter



Kongskilde Industries A/S
 DK-4180 Sorø, Denmark
 Tel. +45 57 86 50 00
 Fax +45 57 86 51 00
 e-mail: mail@kongskilde.com
 www.kongskilde.com