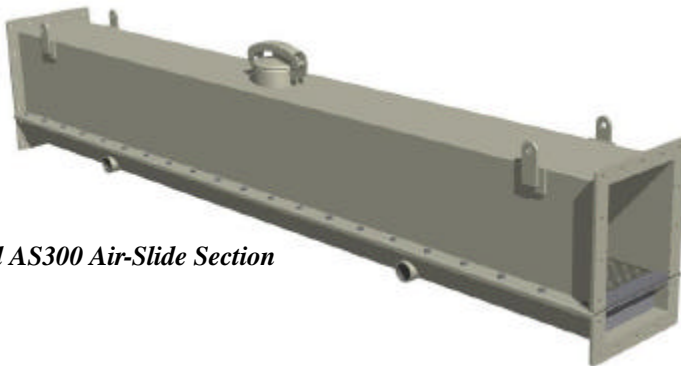




## Air-Slides

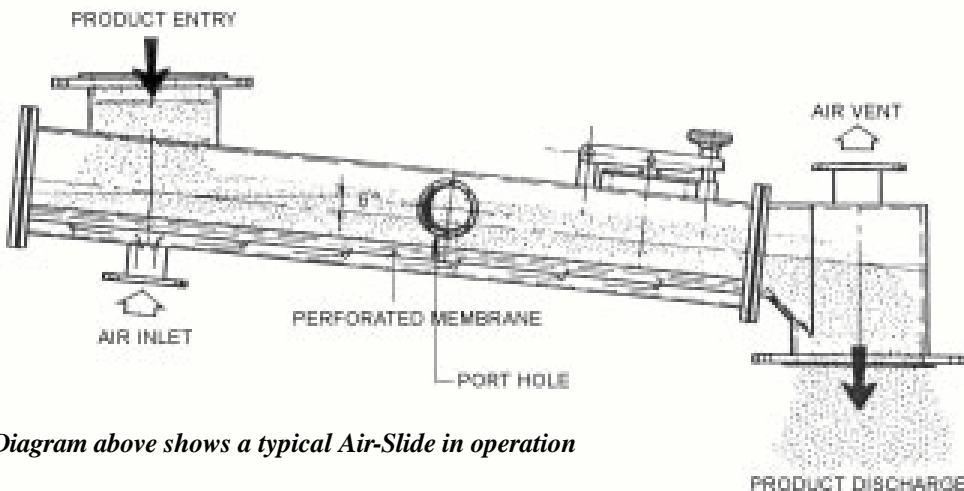
The Air-Slide is designed to convey bulk powders from silos or storage compartments into a processing system. They provide a convenient and easily controllable method of conveying – they can incorporate bends and multiple discharge points if necessary.

The Air-Slide consists of a rectangular chamber separated by a permeable cloth. The chamber is inclined at a very slight angle (as low as 1.5°). Compressed air is injected into the lower chamber which then permeates through the media and “fluidises” the product. The product then behaves like a fluid and “flows” down the length of the chamber. The excess air is vented to a dust collector.



*Standard AS300 Air-Slide Section*

*The above photo shows a typical Air-Slide with multiple inlet points*



*Diagram above shows a typical Air-Slide in operation*

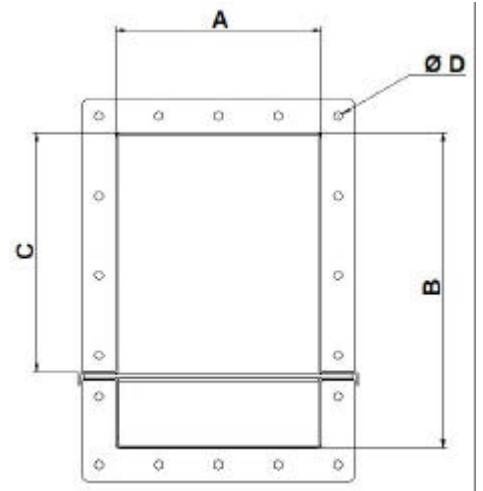


Air-Slide sections are available in a range of standard opening sizes up to lengths of 6 metres, but can also be manufactured to individual customer requirements, they can be joined directly together or incorporate any of the Pneuvay standard Air-Slide accessories (see below) to suit your needs.

### Standard Air-Slide Models

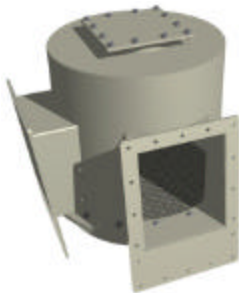
Model #	Flow Rate	A	B	C	ØD	D QTY
AS100		100	150	100	12	
AS200		200	300	200	14	
AS300		300	450	300	14	
AS400		400	600	400	14	
AS500		500	750	500	18	

*All sizes are in mm (Custom sizes and configurations can be made to suit customer requirements)*

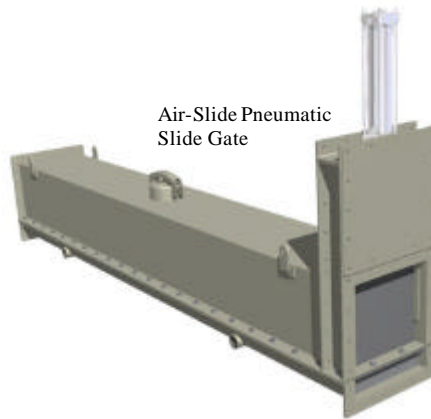


### Standard Air-Slide Accessories

All Air-Slide accessories can be manufactured to suit individual customer needs.



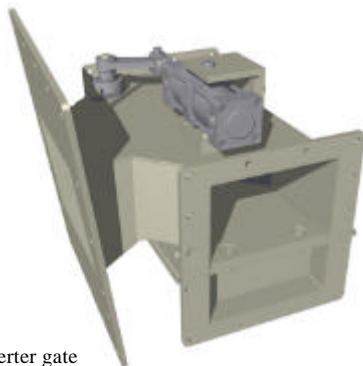
Air-Slide Turning Pot (90° Model Shown)  
Turning pots can be manufactured to almost any angle required.



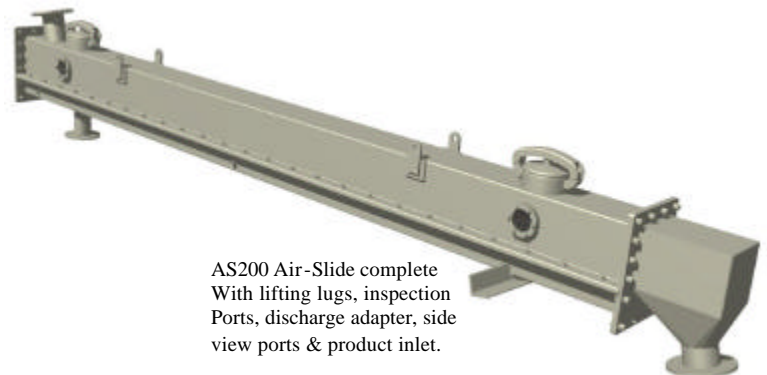
Air-Slide Pneumatic Slide Gate



Single Cartridge Reverse Pulse Dust Collector



Air-Slide Pneumatic diverter gate



AS200 Air-Slide complete  
With lifting lugs, inspection  
Ports, discharge adapter, side  
view ports & product inlet.