



Inspection Hatches & Manholes



Inspection Hatches can be used to:

- ✓ Locate and rectify blockages
- ✓ Check the flow rate of material
- ✓ Check bin levels

Pneuvay Engineering's Inspection Hatches are ideal for many, many different applications.

Available in either galvanized or stainless steel, they can easily be either welded or bolted to existing vessels to make for a safer and more productive working environment. A clear plexiglass model is also available to enable operators to immediately check flow and bin levels.

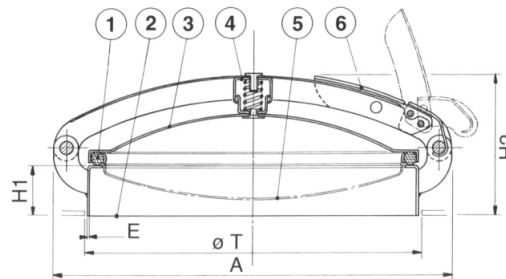
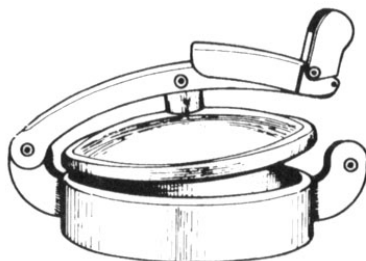
Inspection Hatches can be used in applications such as;

- Airslides
- Day bins
- Granulators
- Silo's
- Extruders
- Dust Collectors

RS Model

Available in sizes from 150mm to 500mm in galvanized or stainless steel.

1. Seal – Natural Rubber
2. Welding base
3. Smooth convex outside cover without retention (180° opening)
4. Constant closing pressure by spring assembly
5. Double bottom (DG version only)
6. Fast opening and closing by toggle fastener with locking capabilities

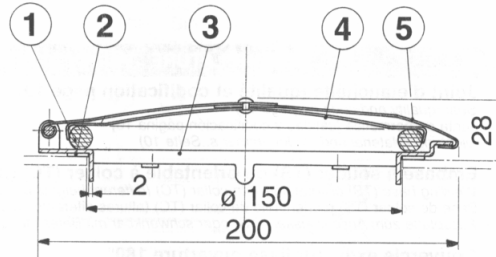
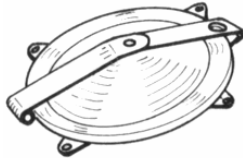


RS Dimensions (mm)					
Model	A	T	H1	H2	E
RS SG 150	265	171	60	130	2
RS SG 200	315	221	60	135	2
RS SG 250	365	271	60	145	2
RS SG 350	465	371	80	175	3
RS SG 450	565	471	100	205	3
RS SG 500	615	521	100	215	3



BM Model

Available in 150mm size
Galvanise Steel or Stainless Steel

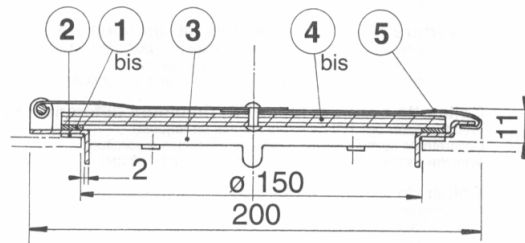
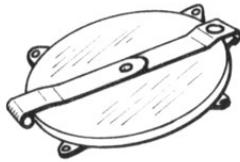


BM & RO Parts

- 1 Seal (natural rubber)
- 1b Window seal (natural rubber)
- 2 Seal on base (black rubber)
- 3 Base to be fixed by screws or crimped by 4 fold down tabs
- 4 Smooth convex outside cover without retention (180° opening)
- 4b Smooth outside plexiglass window (180° opening)
- 5 Fast opening and closing with safety clip

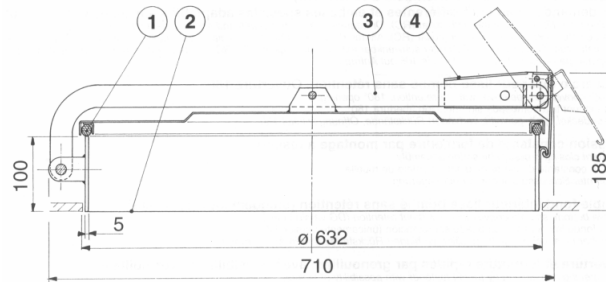
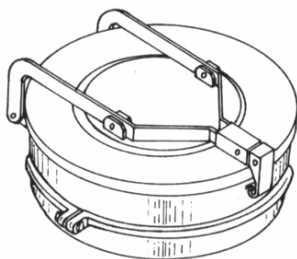
RO Model

Plexiglass opening window.
Available in 150mm size
Galvanised Steel or Stainless Steel



TC Model

Rotatable manhole with cover
(620mm) Steel or Stainless Steel



TS & TO Parts

- 1 Seal (natural rubber)
- 2 Welding base (TS) or rotatable with collar (TC)
- 3 Smooth convex outside cover (180° opening)
- 4 Fast opening and closing by toggle fastener with locking capabilities
- 5 Welding collar for (TC)
- 6 Clamping collar for (TC)

TS Model

Manhole to be welded (620mm)
Steel or Stainless Steel

