



VORTEX® 4-WAY WYE LINE DIVERTER™

The Vortex® 4-Way Wye Line Diverter™ is specifically engineered to handle dry bulk solids in vacuum or dilute phase pneumatic conveying systems with pressures up to 15 psig (1 barg). A full flow orifice provides unrestricted conveying of material with no disk or ledges to impede flow. The diverter seat and live-loaded seals are shielded from abrasion by a metal insert, which provides superior shearing action. The Wye Line Diverter™ is designed to eliminate problems, enabling you to meet your objectives by increasing production, while decreasing labour and equipment costs.

Vortex® Wye Line Diverter™ Features

- Ability to Shift without Shutting Down Blower
- Improves Conveying Efficiency
- Smooth, Unobstructed Bore for Unrestricted Flow of Material
- Seal Protected from Abrasion
- Easy Installation and Maintenance



Valve Specifications

Size/Bore Options	50mm to 200mm Diameters, Pipe or Tube
Media	Powder, Pellets, Granulars
Connection Options	Compression Coupling
Media Temperature	Up to 82°C continuous to 121°C intermittent service, Modifications allow up to 204°C continuous to 232°C intermittent service
Media Pressure	-0.1 MPa +0.1 MPa, 1 barg, 15 psig, depending on size
Metal Construction Options	304 or 316L Stainless Steel, Aluminium, and/or Carbon Steel
Seal/Seat Material Options	Nylon, PET, UHMW, Glass Filled Teflon, Natural Rubber, and/or Silicon Rubber
Drive/Actuation Options	Double Acting Air Cylinder and Solenoid Operated Air Control Valve
Position Confirmation	Magnetic Reed Switch, Proximity Switch, or Mechanical Switch
Compliance/Approvals	CE, ATEX, FDA
Industry Use	Plastics, Petrochemicals, Chemicals, Foods, Minerals, Textiles, Agriculture



Application Specific Modifications

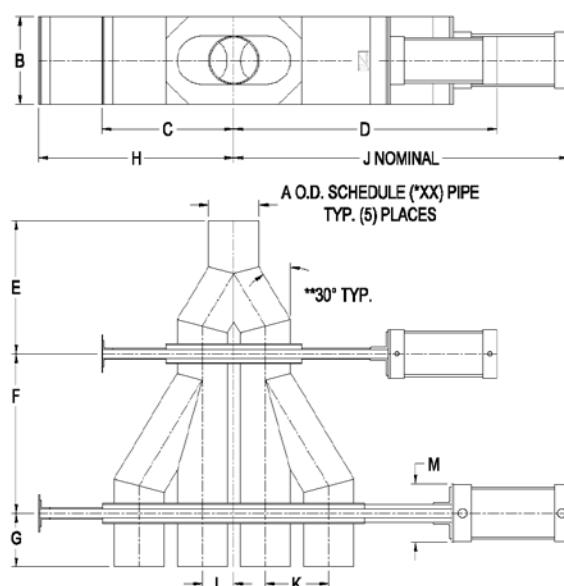
S	Material contact is 316L stainless steel.
MG	Air cylinder has a magnetic ring which activates a magnetic reed position indicating switch.
HT3	Modifications are made allowing 121°C continuous to 149°C intermittent service.
HT4	Modifications are made allowing 204°C continuous to 232°C intermittent service.
P10	Diverter are made with Schedule 10 Pipe.
P40	Diverter are made with Schedule 40 Pipe.
WS1	Slide Blade is electro-polished. Polyethylene Terephthalate (PET) pressure plate seals replace Nylon.



Valves

Handling the world's dry bulk solids®

VORTEX® 4-WAY WYE LINE DIVERTER™ DIMENSIONAL INFORMATION



Tube Model	A	B	C	D	E	F	G	H	J	K	L	M
D2-4(XX)Y	51	133	146	359	184	203	105	210	445	64	32	114
D3-4(XX)Y	76	152	197	454	219	276	105	286	521	89	44	140
D4-4(XX)Y	102	184	267	584	267	337	105	394	759	127	64	178
D5-4(XX)Y	127	229	324	664	321	394	130	476	841	152	76	178
D6-4(XX)Y	152	254	375	740	429	464	130	552	943	178	89	178

Pipe Model	A	B	C	D	E	F	G	H	J	K	L	M
D2-4(XX)Y-P*	60	159	197	454	257	254	137	279	552	89	44	140
D3-4(XX)Y-P*	89	184	267	584	324	337	156	394	737	127	64	178
D4-4(XX)Y-P*	114	229	324	664	349	394	156	476	841	152	76	178
D5-4(XX)Y-P*	141	254	375	740	352	464	130	552	943	178	89	178
D6-4(XX)Y-P*	168	292	549	997	394	441	178	772	1251	254	127	178

All dimensions are in mm, Information subject to change without notice.

(XX) Material of construction, aluminum (AL), carbon steel (CS), or stainless steel (SS).

*Select pipe schedule 10, 20, or 40.

** D6 model has 45° angle.