

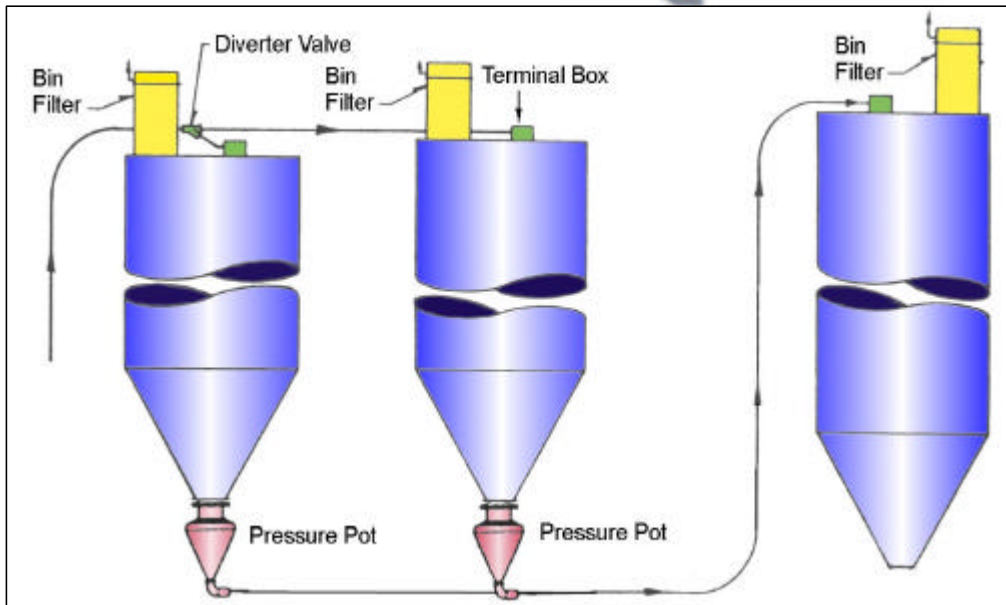


# PRESSURE POTS

Pneuvay's Pressure Pots are simple, dense phase conveyors designed for material transferring applications requiring low velocity conveying.

## Features

- Low Conveying Velocities
- Low Air Volume Required
- Automatic Operation
- Minimal Abrasion of Pipes
- Minimal Product Degradation
- Low energy Requirement
- Cease Operation when empty
- Virtually wear and Maintenance Free



## Typical Applications

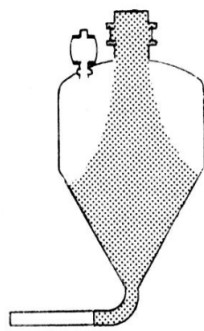
Pressure Pots are suitable for conveying almost any free flowing material. Common applications include:

- Alumina
- Carbon
- Clay
- Corn
- Dust
- Flour
- Fly Ash
- Glass
- Sugar
- Milk
- Paper Scraps
- Plaster
- Polythylene
- Powdered Coal
- Salt
- Sand
- Soya Beans
- Starch
- Limestone
- Laundry Powder

## LOAD CYCLE

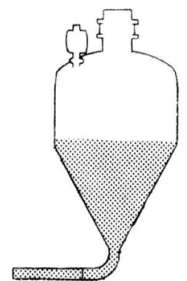
On receiving a remote signal from either a manual start/ stop signal or a process signal, the pressure vessel begins a load cycle.

The load cycle commences when the vent valve opens which releases displaced air or inbuilt pressure from the proceeding transfer. The inlet fill valve then opens, allowing material to flow into the vessel until either a time elapses, or when a specified level or weight is reached. The inlet valve then closes to stop the flow material.



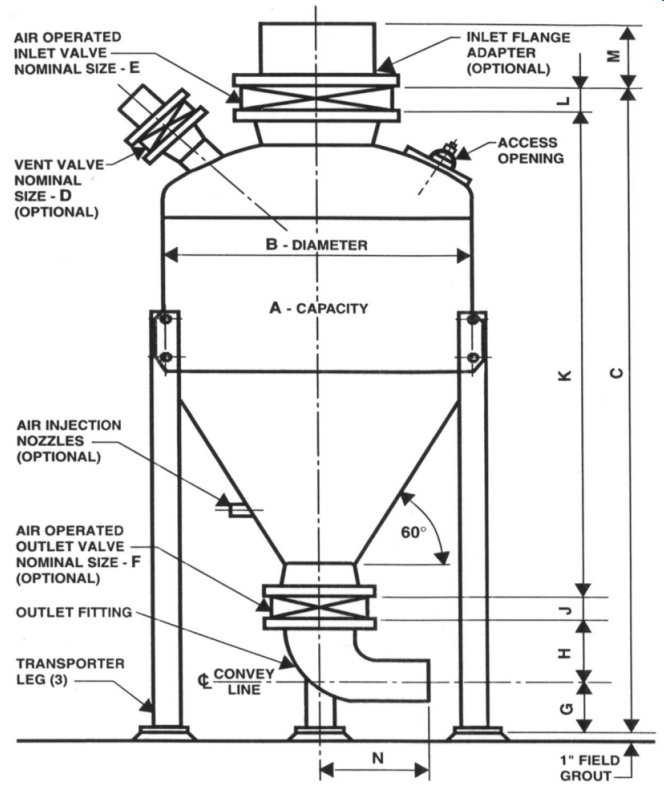
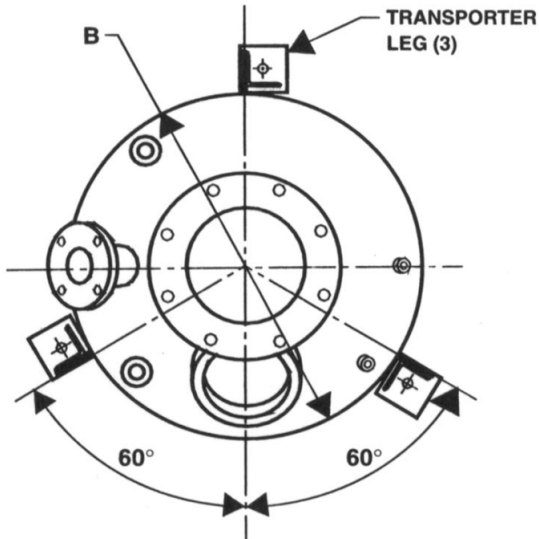
## DISCHARGE CYCLE

For the discharge cycle to commence, the inlet valve must be closed. The discharge cycle begins with the compressed air supply valve opening and pressurizing the vessel. The discharge valve also opens and the product is extruded out through the discharge pipe. When either the pressure is reduced, a timer elapses, or a weighing low setpoint (or a combination of these) is reached, the purge cycle clears the line and the system shuts down awaiting another cycle restart instruction.





**TOP VIEW**



**ELEVATION**

Model	Capacity (litres)	Dimensions (mm)												Approx Weight (kg)
		A	B	C	D	E	F	G	H	J	K	L	M	
A2-3863	32	457	870	40	150	100	100	150	50	506	64	100	28	48
A2-2815-1	90	610	1130	80	200	100	150	180	50	865	64	100	280	125
A2-2815-2	140	610	1315	80	200	100	150	180	50	871	64	100	280	145
A2-2815-3	210	914	1430	80	200	100	150	180	54	982	64	100	280	170
A2-2815-4	280	914	1540	80	250	150	150	240	54	1032	64	100	280	200
A2-2815-5	430	1065	1775	100	250	150	150	240	65	1316	64	100	280	280
A2-2815-6	570	1065	2060	100	250	150	150	240	65	1550	64	100	280	350
A2-2815-7	850	1065	2415	100	250	200	150	280	65	1855	64	100	280	420
A2-2815-8	1200	1220	2630	100	300	200	180	305	65	2010	76	150	280	515
A2-2815-9	1700	1220	3140	100	300	250	205	380	65	2415	76	150	280	600
A2-2815-10	2000	1220	3365	100	300	250	205	380	65	2640	76	150	280	650
A2-2815-11	2300	1220	3620	100	300	250	205	380	65	2900	76	150	280	700
A2-2815-12	2550	1220	3850	100	300	250	205	380	65	3125	76	150	280	740
A2-2815-13	2850	1220	4230	100	400	300	240	460	75	3355	102	150	355	880

\*Due to our continuous improvement program, details and specifications are subject to change at any time without notice