



Valves

Handling the world's dry bulk solids™

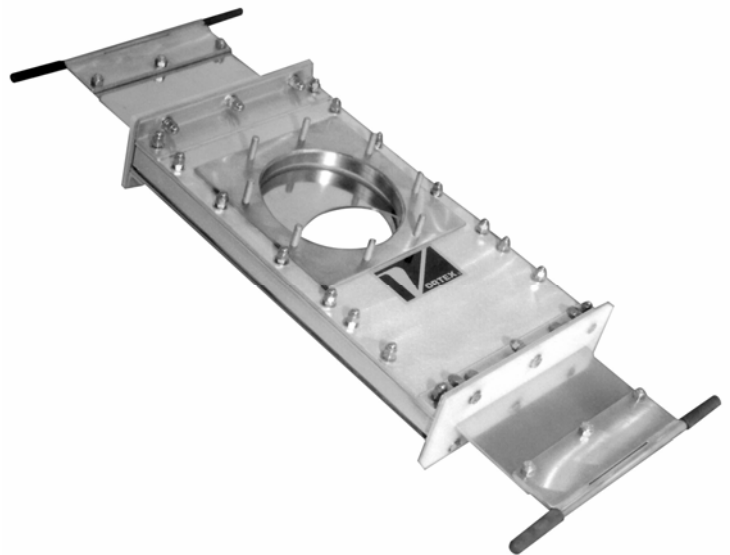


VORTEX® HAND SLIDE ORIFICE GATE™

The Vortex® Hand Slide Orifice Gate™ is designed to specifically to handle dry bulk solids in gravity flow conveying. Traditional knife gates or butterfly valves are designed to handle gases and liquids, not dry materials. These valves rely on soft rubber seals, which erode or tear away during use, allowing leakage of air and material through the valve or into the atmosphere. This causes the need for frequent valve maintenance, production inefficiencies, and unsanitary environments. The Hand Slide Orifice Gate™ is designed to eliminate these problems, enabling you to meet your objectives by increasing production, while decreasing labor and equipment costs.

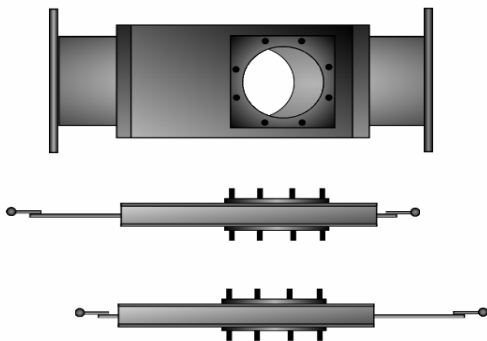
KEY FEATURES

- The Hand Slide Orifice Gate™'s blade and seal design allows the valve to “self-clean” on the opening stroke, which prevents material from packing on the valve's internal seals. This feature is critical to maintain cleanliness and inhibit material leakage across the valve or into the atmosphere.
- The Hand Slide Orifice Gate™ includes hard-polymer seals that compensate for wear over time. These seals are also protected from blast abrasion, allowing long service life and durability, without frequent maintenance.
- If required, the Hand Slide Orifice Gate™ features quick and easy maintenance capabilities, while the valve remains in the conveying line.
- The Hand Slide Orifice Gate™'s blade actuates across hard polymer seals, with no metal on metal contact. This feature allows for easy manual actuation.



Hand Slide Orifice Gate™ with 316L Stainless Steel Material Contact.

VORTEX® HAND SLIDE ORIFICE GATE™ APPLICATIONS



The Vortex® Hand Slide Orifice Gate™ is designed for use with dry materials in gravity flow material handling where a dust tight seal is required. Manual actuation from either side of the gate makes opening, metering, or shutting off material flow quick and easy.

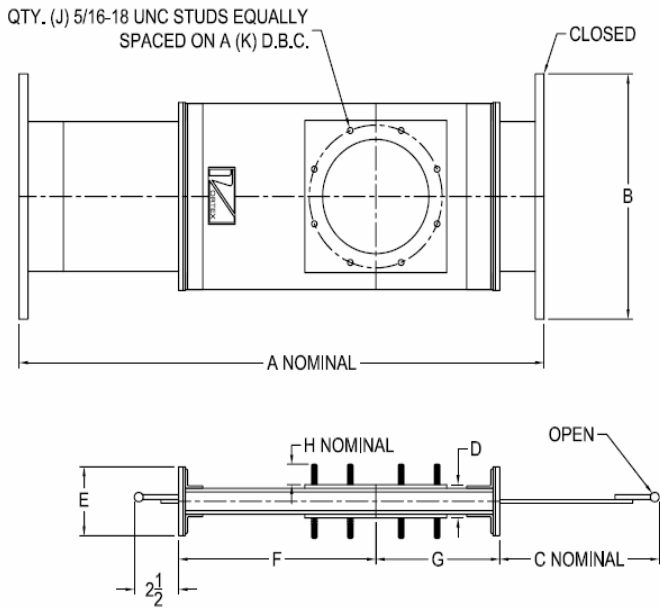
Adapting the Hand Slide Orifice Gate™ to your system requirements is made easy with a wide selection of sizing. The Hand Slide Orifice Gate™ also offers a wide variety of modifications to accommodate high or low temperatures, corrosive, humid, and explosive environments. Consult the factory for application specific information.

Hand Slide Orifice Gate™ Blade Stroke.

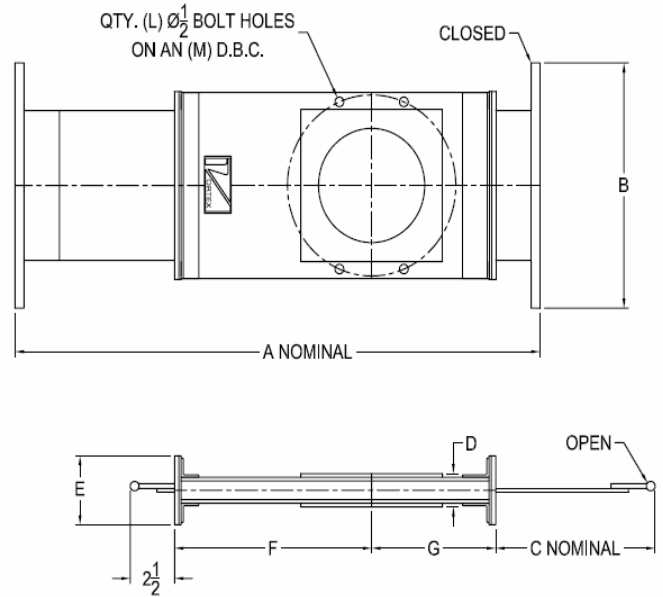
VORTEX[®] HAND SLIDE ORIFICE GATE™ DIMENSIONAL INFORMATION

All dimensions are in inches.

STUD BOLT FLANGED TUBE CONNECTION



OPTIONAL (-P) MODIFICATION BOLT-THROUGH PIPE FLANGE CONNECTION



Information subject to change without notice.

ITEM ID	GATE SIZE	A	B	C	D	E	F	G	H	J	K	L	M	APPROX. WEIGHT	NOMINAL FLOW RATE
HS02	2	16-1/4	8 -7/8	5	1-3/4	3-5/8	4-7/8	3-7/8	1-1/8	4	3-7/8	2	4-3/4	10 LBS	150 CF/H
HS03	3	18-3/4	10 -1/8	6	1-3/4	3-5/8	6-1/4	4-1/2	1-1/8	4	5	2	6	12 LBS	450 CF/H
HS04	4	22-5/8	11 -1/8	7-1/8	1-3/4	3-5/8	8	5	1-1/8	6	5-1/2	4	7-1/2	16 LBS	800 CF/H
HS05	5	26-5/8	12 -1/8	8	1-3/4	3-5/8	10-5/8	6	1-1/8	8	6-1/2	4	8-1/2	20 LBS	1200 CF/H
HS06	6	29-5/8	12-7/8	9	1-3/4	3-5/8	11-1/8	7	1-1/8	8	7-1/2	4	9-1/2	27 LBS	1900 CF/H
HS08	8	35-1/2	14-7/8	11	1-3/4	3-5/8	14-1/8	7-7/8	1-1/8	8	9-1/2	4	11-3/4	35 LBS	4000 CF/H
HS10	10	41-5/8	16-7/8	13	1-3/4	3-5/8	17-1/4	8-7/8	1-1/4	8	11-1/2	4	14 1/4	60 LBS	7000 CF/H
HS12	12	47-1/2	18-7/8	15	1-7/8	4-3/4	20-1/8	9-7/8	1-1/4	12	13-13/16	4	17	72 LBS	122000 CF/H

VALVE MODIFICATIONS

SC	304 STAINLESS STEEL BLADE AND GATE LINER, 440 STAINLESS STEEL ROLLERS, 304 OR 18-8 STAINLESS STEEL ROLLER STUD BOLTS.
WS1	INCORPORATES AN ELECTRO-POLISHED BLADE AND PET PRESSURE PLATE SEALS FOR HANDLING STICKY MATERIALS OR APPLICATIONS THAT REQUIRE WATER WASHDOWN.
HT3	APPLICATIONS REQUIRING 250° F CONTINUOUS SERVICE TO 300° F INTERMITTENT SERVICE.
HT4	APPLICATIONS REQUIRING 400° F CONTINUOUS SERVICE TO 450° F INTERMITTENT SERVICE.
P	INLET AND OUTLET FLANGES DRILLED FOR ANSI BOLT HOLE PATTERN.
H SERIES	ALUMINUM MATERIAL CONTACT.
F SERIES	304 STAINLESS STEEL MATERIAL CONTACT.

Copyright©2006 Salina Vortex® Corporation. All Rights Reserved. HS09-2006.

For more information, please contact Vortex® at 1.888.829.7821 or visit our website at www.vortexvalves.com.