

# VIGILEX®

## EXPLOSION PROTECTION



**STIF**

components for your success

► English



**VIGILEX** explosion vent panels are designed by the STIF Company, who are specialized in manufacturing of components for the bulk handling industry.

Established 1984, the S.T.I.F. Company has earned a solid international reputation by exporting to more than 60 countries. The production unit is based in the west of France near ANGERS, 80 km from the NANTES-ST NAZAIRE harbour, and extends over 10 000 m<sup>2</sup>. These last few months it has devoted itself to the design of a complete range of explosion vent panels. This is the first time that a French manufacturer has entered the explosion vent panel market proposing flat, curved, bent or round panels satisfying most needs. Many vent sizes are available, as well as various options, such as FDA silicone gasket, counter-flanges, anti-UV and bad weather protections, and burst sensor. We can also determine the number and type of vent necessary to protect your installations.

# VIGILEX®



The **VIGILEX explosion vent panels** have been designed to meet with current health and safety requirements and are intended to be used in potentially explosive areas (directive 94/9/CE).

In the event of an explosion the vent panels are designed to evacuate the pressure in order to protect both the workforce and surrounding facilities. The Vigilex explosion vent panels offer a simple and efficient protection system wich is designed to resist vacuum under cycling conditions and can be used in silos, cyclones, filters units and vessels.

[www.vigilex.eu](http://www.vigilex.eu)



## COUNCIL: 94/9/CE 1994

### Conformity:

Ex II GD

EN 14 491 / EN 14 994 / EN 14 797 - 2007 / EN 1127.1 - 2008

EC Type examination certificate: INERIS 08ATEX038X

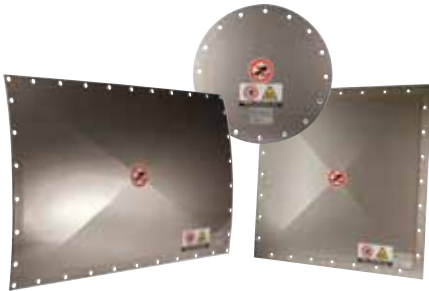
Production quality assurance notification: INERIS 08ATEXQ406



## RANGE

### VIGILEX VL

DESIGNED FOR SINGLE FLAT OR ROUND FILTERS AND SANITARY APPLICATIONS STANDARD VACUUM RESISTANCE : 50 mbar



#### STANDARD CHARACTERISTIC:

- Design : single flat
- Fully frame black EPDM gasket (-40°+80°C)
- Integrated stainless steel flange
- Can be rolled : radius on request

#### OPTION VL SANITARY:

- Panel material stainless steel 316L
- Full frame silicon FDA gasket (-60°+220°C)
- Integrated stainless steel 316L flange
- Can be rolled : radius on request

### VIGILEX VD

OPTIMAL FOR VACUUM PROCESS WITH PULSATING/CYCLING STANDARD VACUUM RESISTANCE : 200 mbar



#### STANDARD CHARACTERISTIC:

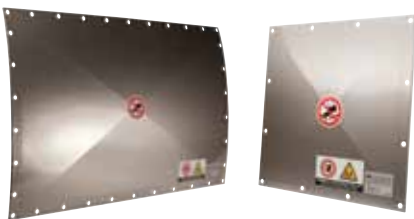
- Design : single domed
- Fully frame black EPDM gasket (-40°+80°C)
- Integrated stainless steel flange
- Other vacuum resistance available

#### OPTION VD SANITARY:

- Panel material stainless steel 316L
- Full frame silicon FDA gasket (-60°+220°C)
- Integrated stainless steel 316L flange
- Other vacuum resistance available

### VIGILEX VM

DESIGNED FOR SINGLE FLAT OR ROUND APPLICATIONS : FILTERS, SILOS, ... STANDARD VACUUM RESISTANCE : 50 mbar



#### STANDARD CHARACTERISTIC:

- Design single flat
- No additional flanges needed
- Black EPDM gasket (-40°+80°C)
- Can be rolled : radius on request

### VIGILEX VH

DESIGNED FOR SINGLE FLAT AND HIGH PERFORMANCE PULSATING APPLICATIONS STANDARD VACUUM RESISTANCE : 100 mbar



#### STANDARD CHARACTERISTIC:

- Design single flat
- No additional flanges needed
- Fully frame white PCE gasket (-50°+100°C)
- Supplied complete with bolt, earth lead and special patenized washer for tightening calibration



# EXPLOSION VENT PANEL DIMENSIONS: VL - VD - VM - VH

## RECTANGULAR & SQUARE

INTERNAL DIMENSION		EXTERNAL DIMENSION	AREA
( mm )	Inches	( mm )	( cm <sup>2</sup> )
110 x 290	4 x 11	174 x 354	290
* 110 x 530	4 x 21	210 x 630	580
130 x 550	5 x 22	220 x 640	700
150 x 600	6 x 24	230 x 680	885
205 x 290	8 x 11	285 x 370	580
220 x 420	9 x 17	300 x 500	910
229 x 229	9 x 9	310 x 310	515
229 x 305	9 x 12	310 x 386	690
247 x 610	10 x 24	327 x 690	1485
* 250 x 480	4 x 21	350 x 580	1200
270 x 500	11 x 20	360 x 590	1330
* 280 x 530	11 x 21	380 x 630	1480
* 300 x 600	12 x 24	366 x 666	1585
305 x 457	12 x 18	386 x 538	1385
319 x 765	12 x 30	405 x 850	2480
340 x 385	13 x 15	404 x 449	1250
340 x 440	13 x 17	404 x 504	1430
375 x 655	15 x 25	460 x 740	2485
390 x 620	15 x 24	470 x 700	2395
* 400 x 400	16 x 16	496 x 496	1580
410 x 410	16 x 16	480 x 480	1660
457 x 890	20 x 28	537 x 970	4040
470 x 610	18 x 24	550 x 690	2845
* 480 x 480	19 x 19	580 x 580	2300
* 480 x 680	19 x 27	580 x 780	3260
490 x 590	19 x 23	570 x 670	2865
500 x 500	20 x 20	590 x 590	2480
500 x 700	20 x 28	590 x 790	3475
525 x 668	21 x 26	630 x 765	3475

INTERNAL DIMENSION		EXTERNAL DIMENSION	AREA
( mm )	Inches	( mm )	( cm <sup>2</sup> )
* 580 x 780	22 x 30	680 x 880	4520
586 x 920	23 x 36	666 x 1000	5360
* 600 x 600	24 x 24	666 x 666	3410
610 x 610	24 x 24	690 x 690	3695
610 x 1118	24 x 44	690 x 1198	6785
629 x 1004	25 x 40	685 x 1059	6050
* 645 x 645	21 x 26	740 x 740	4160
653 x 653	26 x 26	740 x 740	4260
669 x 669	26 x 26	740 x 740	4460
* 680 x 680	27 x 27	780 x 780	4620
680 x 880	27 x 35	780 x 980	5980
700 x 700	28 x 28	790 x 790	4870
780 x 780	30 x 31	880 x 880	6080
* 780 x 980	30 x 39	880 x 1080	7640
* 780 x 1180	30 x 46	880 x 1280	9200
800 x 800	31 x 31	850 x 850	6145
800 x 1000	31 x 40	890 x 1090	7960
* 880 x 880	35 x 35	980 x 980	7740
900 x 900	35 x 35	990 x 990	8060
915 x 1118	36 x 44	996 x 1198	10200
* 920 x 920	36 x 36	1000 x 1000	8425
920 x 1380	36 x 54	1000 x 1460	12420
940 x 1440	37 x 56	1000 x 1500	13250
970 x 970	38 x 38	1056 x 1056	9405
* 980 x 980	39 x 39	1080 x 1080	9600
1000 x 1000	40 x 40	1056 x 1056	9680
1020 x 1020	40 x 40	1100 x 1100	10360
1080 x 1080	42 x 42	1180 x 1180	11620
1130 x 1130	44 x 44	1220 x 1220	12720
1180 x 1180	46 x 46	1280 x 1280	13875

VH only available following: \*

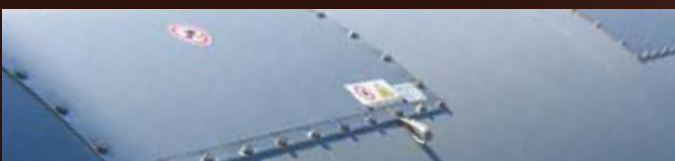
## ROUND

INTERNAL DIMENSION		EXTERNAL DIMENSION	AREA
( mm )	Inches	( mm )	( cm <sup>2</sup> )
Ø 200	8	Ø 290	280
Ø 250	10	Ø 340	450
Ø 300	12	Ø 390	645
Ø 350	14	Ø 440	840
Ø 400	16	Ø 490	1135
Ø 450	18	Ø 540	1450

INTERNAL DIMENSION		EXTERNAL DIMENSION	AREA
( mm )	Inches	( mm )	( cm <sup>2</sup> )
Ø 500	20	Ø 590	1785
Ø 600	24	Ø 690	2585
Ø 700	28	Ø 790	3515
Ø 750	30	Ø 840	4045
Ø 800	31	Ø 890	4680
Ø 900	36	Ø 990	5795
Ø 980	39	Ø 1070	6800

## TECHNICAL INFORMATION

STIF MODEL	DESIGN	Pstat @ 20 °C	EFFICIENCY RATIO	MAX VACUUM	KST MAX	OPTION SANITARY
VL	Single flat Integrated frame	0,1 bar (±15%)	80 % - 100 %	50 mbar	500 bar.m/s	*
VD	Single domed Integrated frame		80 % - 100 %	200-500 mbar	500 bar.m/s	*
VM	Single flat		80 % - 100 %	50 mbar	350 bar.m/s without additional flange 500 bar.m/s with additional flange	
VH	Single flat		80 % - 100 %	100 mbar		



## ACCESSORIES

### THERMAL INSULATION

#### VIGILEX TI

Thermal insulation is provided by using ARMAFLEX covered with aluminium foil preventing heat loss, condensation and offering UV protection.



### WEATHER PROTECTION

#### VIGILEX WI

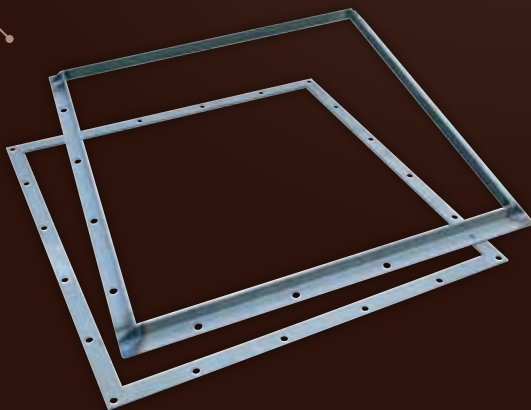
This lightweight weather cover offers protection to the explosion vent panels from the elements with the effects of wind, snow, hail and dirt minimised.



### MOUNTING FRAMES

#### VIGILEX CB

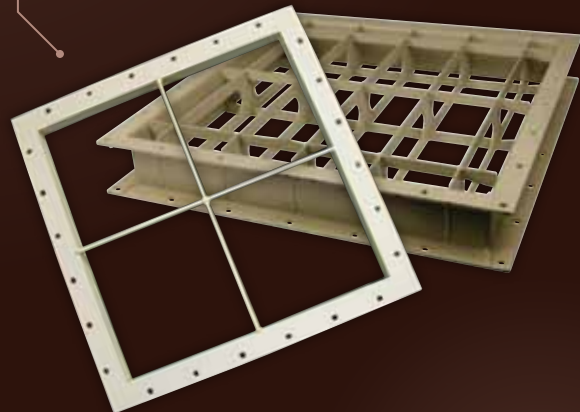
Range of outer flanges in either galvanised or stainless steel.



### VACUUM SAFETY GRID

#### VIGILEX GS & GD

Range of fall and vacuum protection in galvanised or stainless steel.



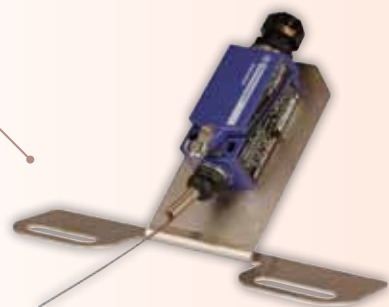
## OPTIONS

- Other sizes available on request
- Different burst pressure available on request
- Other gasket material available on request
- Bolts and earth lead
- Material stainless steel 316L on request
- Delivery without integrated flange: VD & VL

## ACCESSORIES

### BURST SENSOR VIGILEX MEC

Mechanical burst sensor Atex Zone 21.  
Voltage: 12-240 V AC/DC



### VIGILEX MAG

Magnetic burst sensor Atex Zone 21.  
Voltage: 12-60 V DC

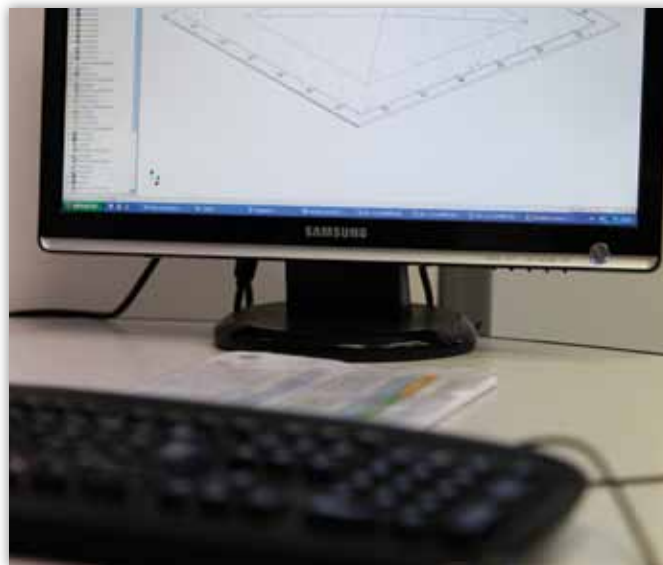


### VIGILEX SEC

Breakable burst sensor Atex Zone 21.  
Voltage: 12-24 V DC

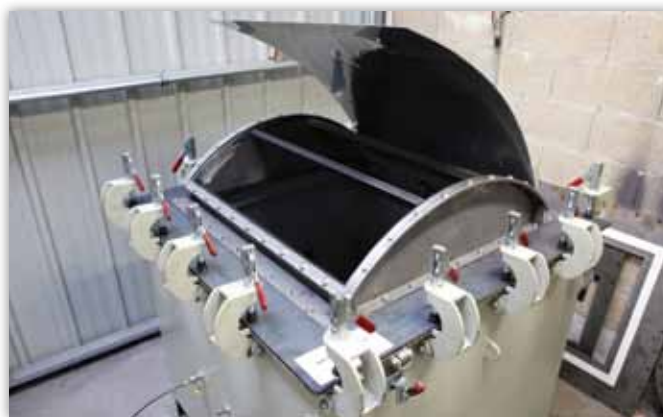


## VENT AREA CALCULATION



We calculate the vent area using the technical specifications of the vessels according to the **EN 14 491, EN 14 994, VDI 3673** or **NFPA68** standards.

## QUALITY CONTROL



We test the vent panels in our factory according to **EN 14 797**. These panels are manufactured under the **CE examination certificate type INERIS 08ATEX0038X** and the quality management system of the company is certified by the **CE quality certification INERIS 08ATEXQ406**.

Explosion vent panels are supplied with a certificate of conformity complete with burst test results along with installation guidelines.



## EUROPE

### STIF (Head office)

#### Factory

Z.A. de la Lande  
49170 Saint-Georges-sur-Loire  
FRANCE  
Tél.: +33 2 41 72 16 82  
Fax: +33 2 41 39 32 12  
E mail: sales@stifnet.com  
Web: www.stifnet.com

### STIF IBERICA

#### Sales Office

La Selva - 21 Nave 2  
Pol. Indus. Les Salines  
08880 Cubelles - BARCELONA  
ESPAÑA  
Tfno.: +34 938 950 262  
Fax: +34 938 950 298  
E mail: ventas@stifiberica.es  
Web: www.stifnet.com

## ASIA

### STIF (SUZHOU)

#### Factory

Unit 7, N° 2318 - East Taihu Lake Road  
Wuzhong District, Suzhou City  
Jiangsu Province, CHINA  
Ph.: +86 512 6656 8968  
Fax: +86 512 6656 9128  
E mail: sales@stif.cn  
Web: www.stif.cn

### STIF ASIA

#### Sales Office

2 Jurong East St 21  
#04-28K IMM Building  
SINGAPORE 609601  
Ph.: +65 6563-2098  
Fax: +65 6562-6083  
E mail: sales@stif.com.sg  
Web: www.stifnet.com



# STIF

[www.vigilex.eu](http://www.vigilex.eu)